

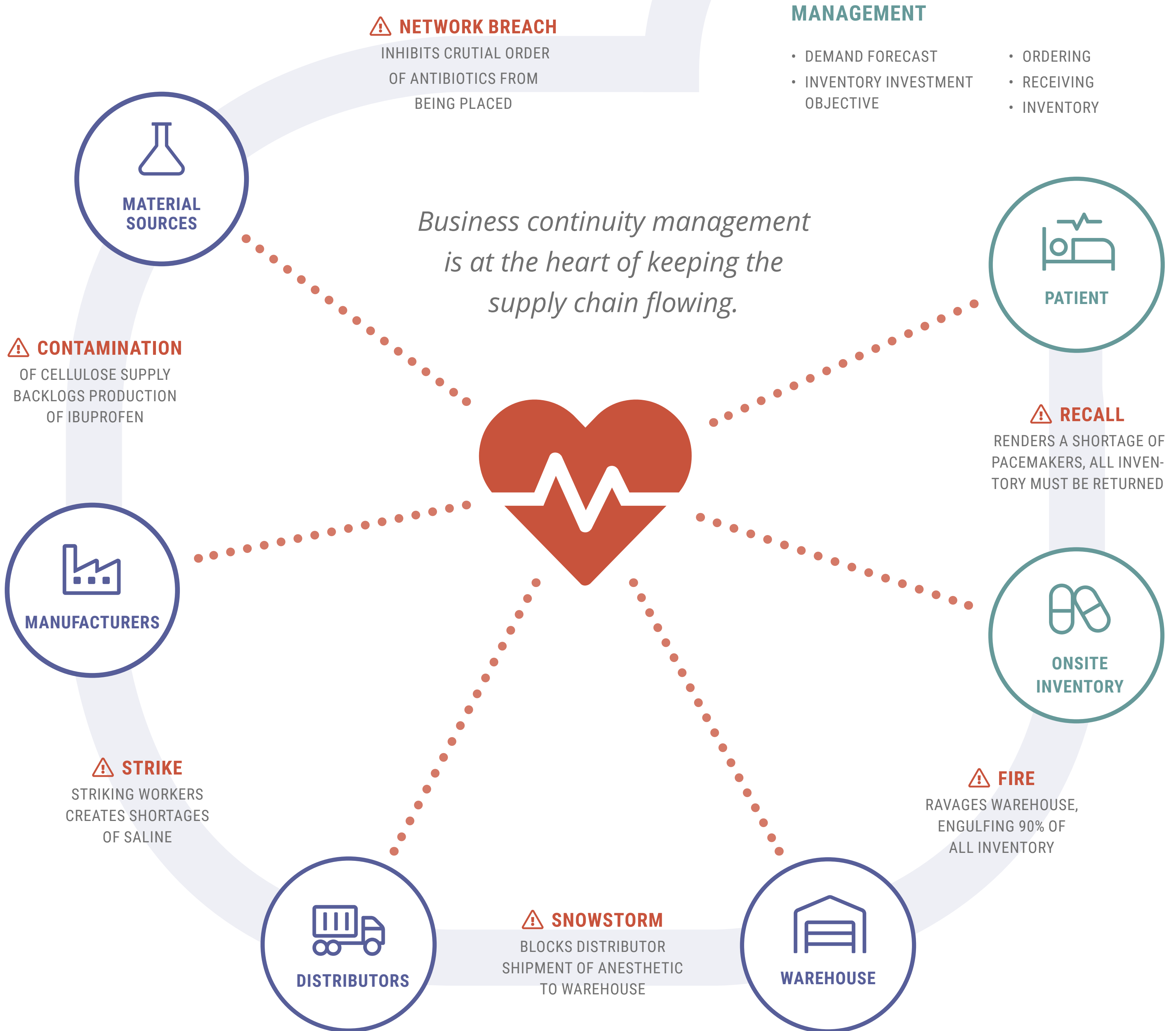
# Keep Your Supply Chain Flowing with Business Continuity Management

From raw source materials to the final product utilized by medical staff, every component of a healthcare provider's supply chain is crucial to its ability to care for its patients. But the multi-stage journey makes it vulnerable to an endless forecast of disruptions.



## HEALTHCARE PROVIDER SUPPLY MANAGEMENT

- DEMAND FORECAST
- INVENTORY INVESTMENT OBJECTIVE
- ORDERING
- RECEIVING
- INVENTORY



## Keep the Flow Going with BCM

Attentive BCM can temper or help avoid any one of the above disruptions by:

- ➔ Giving you all the tools to effectively evaluate your threats and weaknesses.
- ➔ Helping to remedy your weaknesses to avert blockages in your supply chain and construct actionable plans and processes.
- ➔ Aiding discovery of potential finance loss of particular disruptions and your Recovery Time Objectives (RTOs).